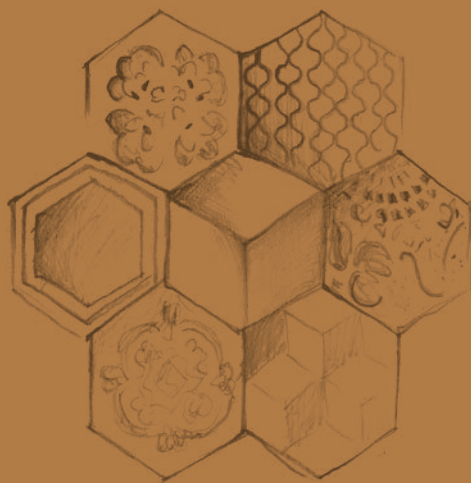


Terra



Terra

Dagli archivi storici
di Marca Corona
abbiamo selezionato
e reinterpretato in
chiave contemporanea
forme, geometrie
e pattern, che
si inseriscono
perfettamente nello
stile più attuale.

From our archives
we have selected and
re-interpreted in a
contemporary fashion
geometries and
patterns that get new
life in the modern
style.





Terra

La collezione Terra recupera il gusto decorativo rendendolo contemporaneo, l'effetto cotto - cemento è esaltato dal formato esagonale e dal classico formato 20x20.

I 3 toni caldi e i 3 freddi spaziano in tutta la gamma cromatica per creare ambienti personalizzati e adatti ad ogni situazione.

I decori in 7,5x30 in 4 varianti, combinati fra loro o con i fondi permettono di creare intere quinte ornamentali.

Le decorazioni, sia su 20x20 che esagona, spaziano dal geometrico al floreale stilizzato per creare ambienti molto decorativi ma anche minimali. I pattern possono essere mixati fra loro permettendo di creare infinite combinazioni.

The Terra collection recaptures the taste for decoration making it more contemporary the terracotta-cement look is exalted by the hexagonal form and by the classic 20x20 size of the tile.

The 3 warm and 3 cold hues extend across the entire chromatic range to create personalised ambiances that are perfect for every circumstance. The 7,5x30 decors in 3 variants, combined together or with the backdrops, mean being able to create decorated partitions. The decorations, on the 20x20 as well as the hexagonal tile, extend from the geometrical to the stylised floral motif to create extremely decorative ambiances which, at the same time, are also minimal. The patterns can be mixed, creating an infinite number of combinations.



Terra

FORMATI: 20x20 cm, Esagono 25x21,6 cm, 7,5x30 cm
SIZES: 8"x8", Hexagon 10"x8.5", 3"x12"

TECNOLOGIA: Gres porcellanato fine colorato in massa
TECNOLOGY: full-body coloured porcelain stoneware

SPESORE: 20x20 cm 9 mm, Esagono 25x21,6 cm 9 mm, 7,5x30 cm 8,5 mm
THICKNESS: 8"x8" 9 mm, Hexagon 10"x8.5" 9 mm, 3"x12" 8,5 mm

ASPETTO: Cotto Cemento
LOOK: TerraCotta/Concrete

COLORI CALDI: Avorio, Ocra, Rosso
WARM COLORS: Avorio, Ocra, Rosso

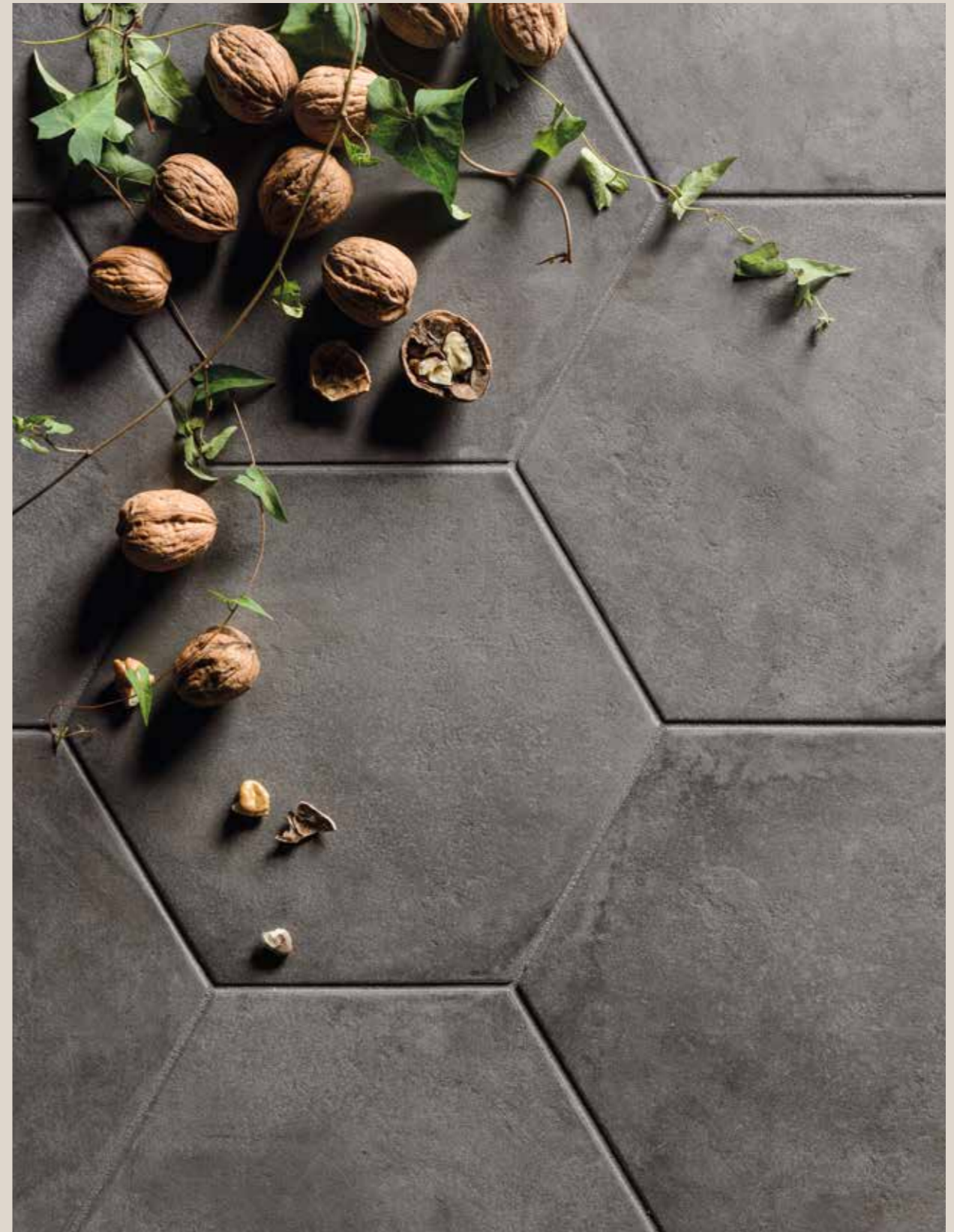
COLORI FREDDI: Grigio, Antracite, Nero
COLD COLORS: Grigio, Antracite, Nero

DECORI: geometrici, floreali stilizzati
DECORS: geometric, stylized floral



 **made in italy**
SINCE 1741

20% MINIMUM
RECYCLING
CERAMIC
per i colori / for colors:
rosso, antracite e nero
20x20 - 8"x8", 25x21,6 - 10"x8.5"



Pavimento/floor: esa. 25x21,6 cm (10"x8.5") nero

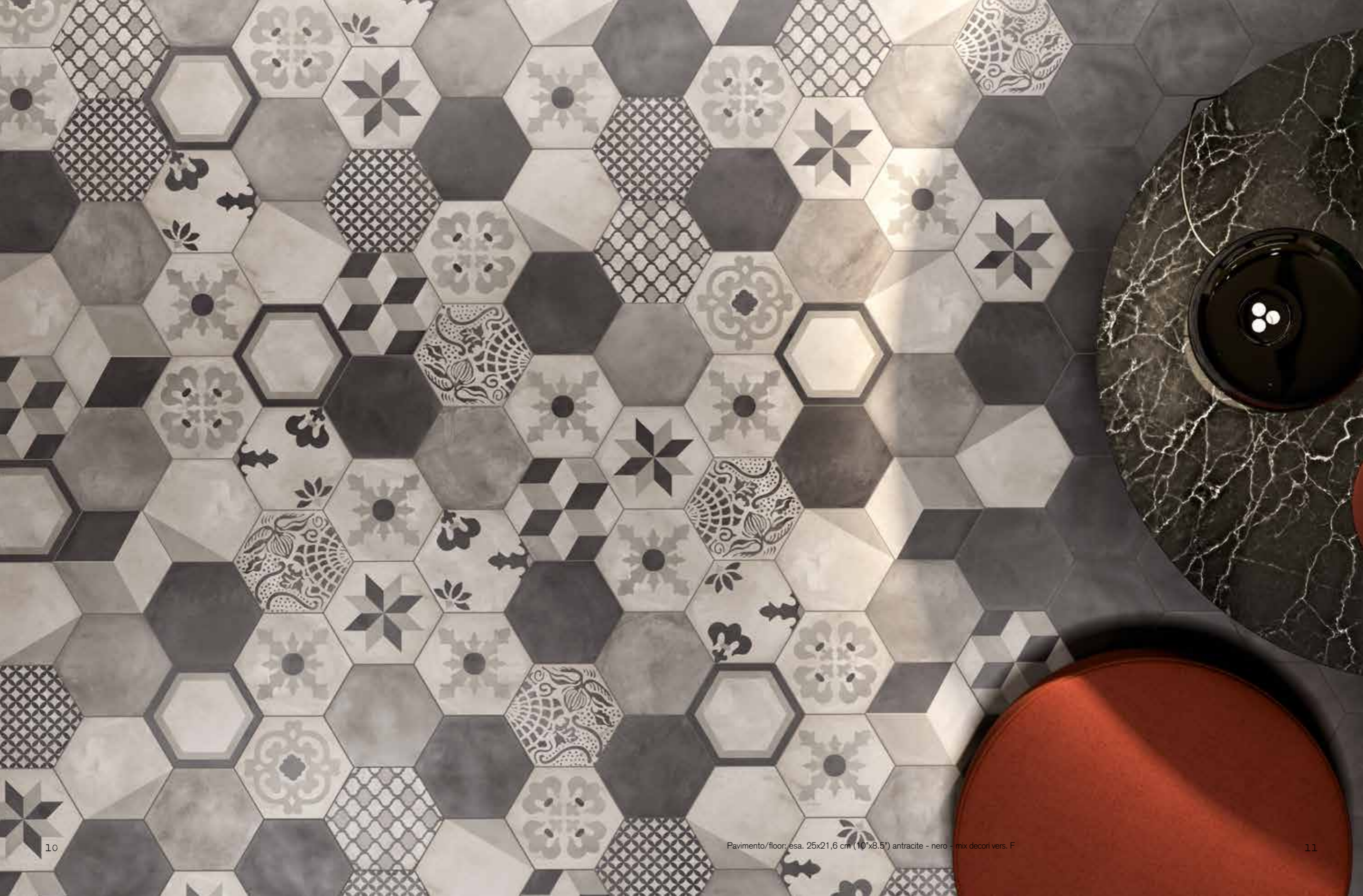


Percorsi incrociati
Crossroad



Rivestimento/wall: esa. 25x21,6 cm (10"x8.5") antracite - nero - mix decori vers. F





A ognuno il proprio stile
Personal style for everyone







Insolite fragranze
Unusual fragrances







La Boulangerie

Il giardino dei profumi
The garden of scents







Incontri sorprendenti
Special Dating



Pavimento/floor: esa. 25x21,6 cm (10"x8.5") dec. rombo vers. F - 22,5x90 beige (Atelier)
Rivestimento/wall: 7,5x30 cm (3"x12") grigio



Pavimento/floor: esa. 25x21,6 cm (10"x8.5") dec. rombo vers. F - 22,5x90 beige (Atelier)
Rivestimento/wall: 7,5x30 cm (3"x12") grigio

Contrasti
Contrasts



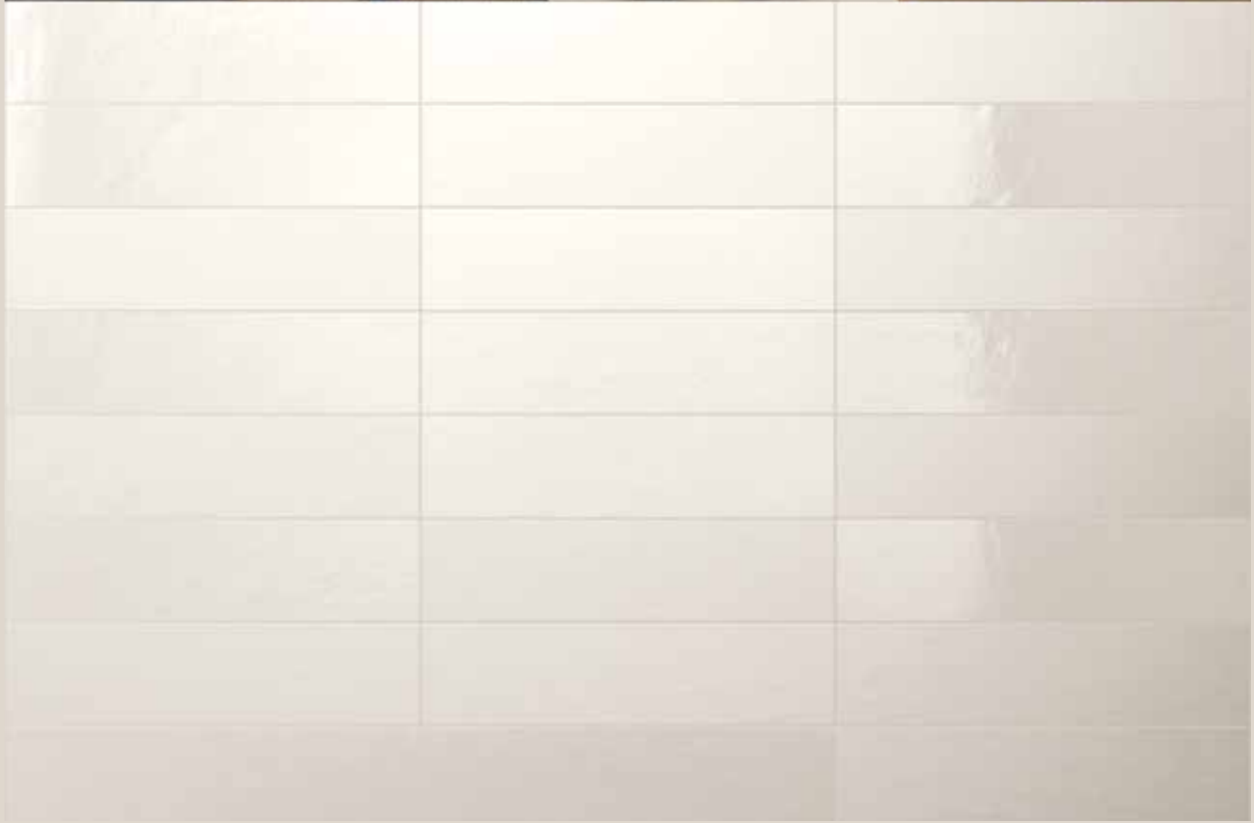
Pavimento/floor: esa. 25x21,6 cm (10"x8.5") dec. porzione vers. C
Rivestimento/wall: 7,5x30 cm (3"x12") avorio - ocra



Pavimento/floor: esa. 25x21,6 cm (10"x8.5") dec. porzione vers. C
Rivestimento/wall: 7,5x30 cm (3"x12") avorio - ocra



Semplice fantasia
Easy fantasy



Rivestimento/wall: 7,5x30 cm (3"x12") white - white matt (Tone)



Pavimento/floor: 20x20 cm (8"x8") decori mix vers. F
Rivestimento/wall: 7,5x30 cm (3"x12") white - white matt (Tone)



Buongiorno luce
Good morning light

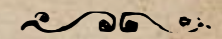


Pavimento/floor: 20x20 cm (8"x8") nero - rosso
Rivestimento/wall: 20x20 cm (8"x8") dec. astro vers F.

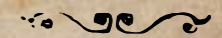




gres fine porcellanato
colorato in massa
fine full-body coloured
porcelain stoneware



Terra



pavimento e rivestimento / floor and wall
 spessore / thickness: 9 mm



0089 Ter. Avorio Esagono
 25x21,6 cm - 10"x8.5"



0090 Ter. Ocra Esagono
 25x21,6 cm - 10"x8.5"



*0091 Ter. Rosso Esagono
 25x21,6 cm - 10"x8.5"



0092 Ter. Grigio Esagono
 25x21,6 cm - 10"x8.5"



*0093 Ter. Antracite Esagono
 25x21,6 cm - 10"x8.5"



*0094 Ter. Nero Esagono
 25x21,6 cm - 10"x8.5"



0075 Ter. Avorio 20
 20x20 cm - 8"x8"



0076 Ter. Ocra 20
 20x20 cm - 8"x8"



*0077 Ter. Rosso 20
 20x20 cm - 8"x8"



0078 Ter. Grigio 20
 20x20 cm - 8"x8"



*0079 Ter. Antracite 20
 20x20 cm - 8"x8"



*0080 Ter. Nero 20
 20x20 cm - 8"x8"

rivestimento / wall
 spessore / thickness: 8,5 mm



**0081 Ter. Avorio 7,5
 7,5x30 cm - 3"x12"



**0082 Ter. Ocra 7,5
 7,5x30 cm - 3"x12"



0417 Ter. Avorio dec S/3
 7,5x30 cm - 3"x12"



0418 Ter. Ocra dec S/3
 7,5x30 cm - 3"x12"



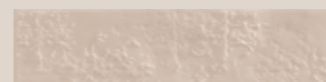
rivestimento / wall
 spessore / thickness: 8,5 mm



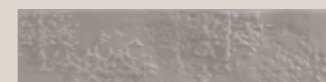
**0083 Ter. Grigio 7,5
 7,5x30 cm - 3"x12"



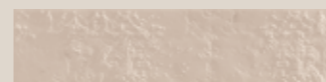
**0084 Ter. Antracite 7,5
 7,5x30 cm - 3"x12"



0419 Ter. Grigio dec S/3
 7,5x30 cm - 3"x12"



0420 Ter. Antracite dec S/3
 7,5x30 cm - 3"x12"





0089 Ter. Avorio Esagono
25x21,6 cm - 10"x8.5"



0090 Ter. Ocra Esagono
25x21,6 cm - 10"x8.5"



0091 Ter. Rosso Esagono
25x21,6 cm - 10"x8.5"



0092 Ter. Grigio Esagono
25x21,6 cm - 10"x8.5"



0093 Ter. Antracite Esagono
25x21,6 cm - 10"x8.5"



0094 Ter. Nero Esagono
25x21,6 cm - 10"x8.5"



V3 Variazione moderata / Moderate Variation



0075 Ter. Avorio 20
20x20 cm - 8"x8"



0076 Ter. Ocra 20
20x20 cm - 8"x8"



0077 Ter. Rosso 20
20x20 cm - 8"x8"



0078 Ter. Grigio 20
20x20 cm - 8"x8"



0079 Ter. Antracite 20
20x20 cm - 8"x8"



0080 Ter. Nero 20
20x20 cm - 8"x8"



V3 Variazione moderata / Moderate Variation

decori esagono / esagono decoration



0399 Ter. Cubo vers. C
25x21,6 cm - 10"x8.5"



0393 Ter. Cornice vers. C
25x21,6 cm - 10"x8.5"



*0395 Ter. Porzione vers. C
25x21,6 cm - 10"x8.5"



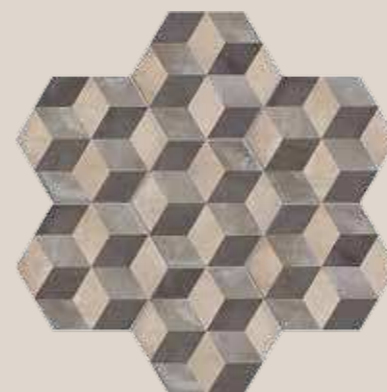
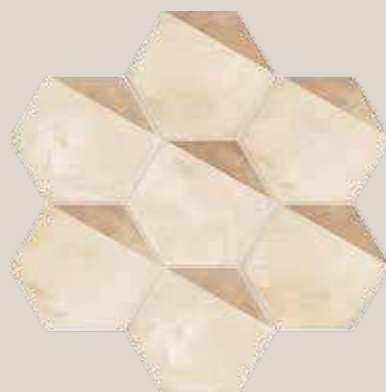
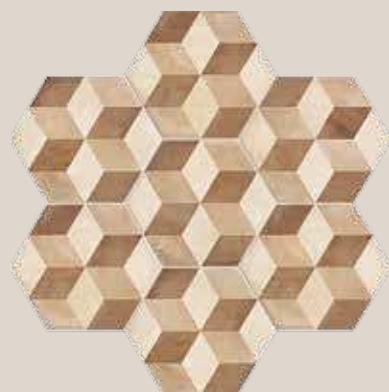
0400 Ter. Cubo vers. F
25x21,6 cm - 10"x8.5"



0394 Ter. Cornice vers. F
25x21,6 cm - 10"x8.5"



0396 Ter. Porzione vers. F
25x21,6 cm - 10"x8.5"



0397 Ter. Rombo vers. C
25x21,6 cm - 10"x8.5"



0403 Ter. Stella vers. C
25x21,6 cm - 10"x8.5"



0405 Ter. Giglio vers. C
25x21,6 cm - 10"x8.5"



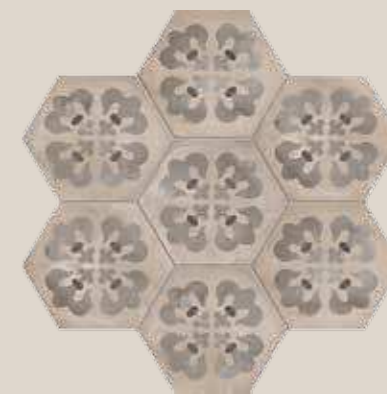
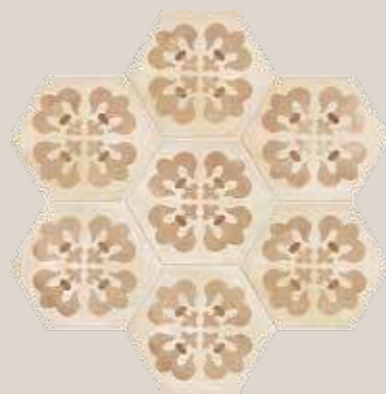
0398 Ter. Rombo vers. F
25x21,6 cm - 10"x8.5"



0404 Ter. Stella vers. F
25x21,6 cm - 10"x8.5"



0406 Ter. Giglio vers. F
25x21,6 cm - 10"x8.5"



decori esagono / esagono decoration



0401 Ter. Floreale vers. C
25x21,6 cm - 10"x8.5"



0409 Ter. Mix Giglio vers. C
25x21,6 cm - 10"x8.5"



0415 Ter. Fiore vers. C
25x21,6 cm - 10"x8.5"



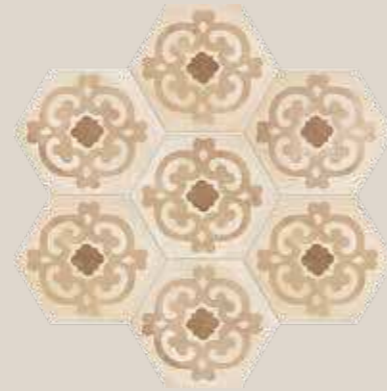
0402 Ter. Floreale vers. F
25x21,6 cm - 10"x8.5"



0410 Ter. Mix Giglio vers. F
25x21,6 cm - 10"x8.5"



0416 Ter. Fiore vers. F
25x21,6 cm - 10"x8.5"



0407 Ter. Cardinale vers. C
25x21,6 cm - 10"x8.5"



0413 Ter. Astro vers. C
25x21,6 cm - 10"x8.5"



0411 Ter. Coloniale vers. C
25x21,6 cm - 10"x8.5"



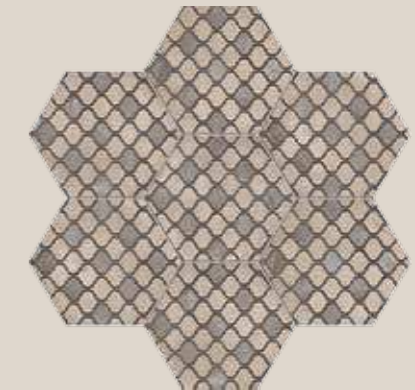
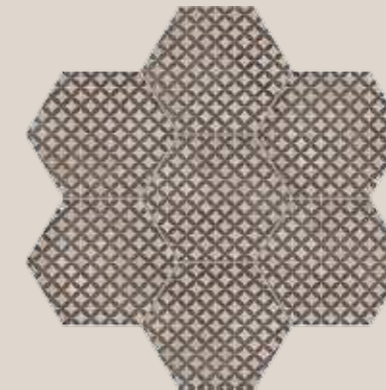
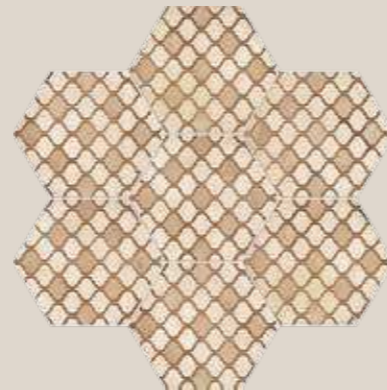
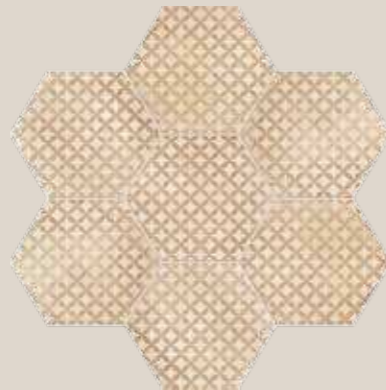
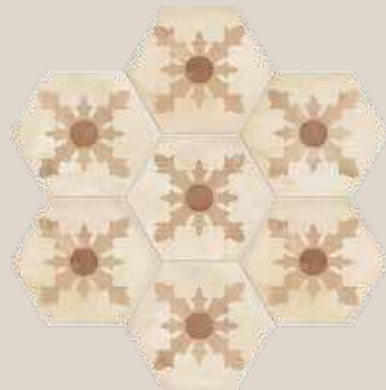
0408 Ter. Cardinale vers. F
25x21,6 cm - 10"x8.5"



0414 Ter. Astro vers. F
25x21,6 cm - 10"x8.5"



0412 Ter. Coloniale vers. F
25x21,6 cm - 10"x8.5"



decori 20x20 cm / 8"x8" decoration



0369 Ter. Cubo vers. C
20x20 cm - 8"x8"



0371 Ter. Stella vers. C
20x20 cm - 8"x8"



0373 Ter. Ottagono vers. C
20x20 cm - 8"x8"



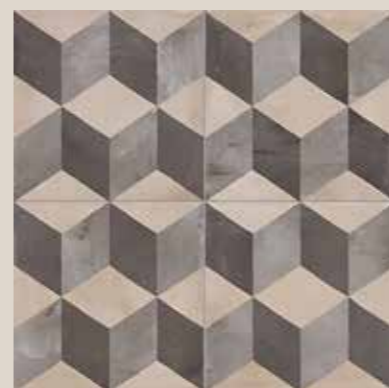
0370 Ter. Cubo vers. F
20x20 cm - 8"x8"



0372 Ter. Stella vers. F
20x20 cm - 8"x8"



0374 Ter. Ottagono vers. F
20x20 cm - 8"x8"



*0375 Ter. Triangolo vers. C
20x20 cm - 8"x8"



0377 Ter. Quadrato vers. C
20x20 cm - 8"x8"



*0379 Ter. Linea vers. C
20x20 cm - 8"x8"



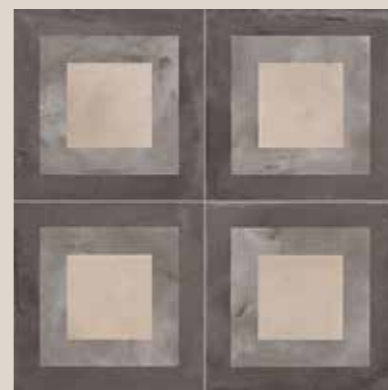
*0376 Ter. Triangolo vers. F
20x20 cm - 8"x8"



0378 Ter. Quadrato vers. F
20x20 cm - 8"x8"



*0380 Ter. Linea vers. F
20x20 cm - 8"x8"



decori 20x20 cm / 8"x8" decoration



0381 Ter. Astro vers. C
20x20 cm - 8"x8"



0383 Ter. Geometria vers. C
20x20 cm - 8"x8"



0385 Ter. Coloniale vers. C
20x20 cm - 8"x8"



0387 Ter. Cardinale vers. C
20x20 cm - 8"x8"



0389 Ter. Giglio vers. C
20x20 cm - 8"x8"



*0391 Ter. Ornamento vers. C
20x20 cm - 8"x8"



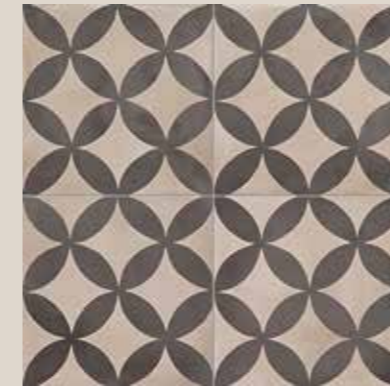
0382 Ter. Astro vers. F
20x20 cm - 8"x8"



0384 Ter. Geometria vers. F
20x20 cm - 8"x8"



0386 Ter. Coloniale vers. F
20x20 cm - 8"x8"



0388 Ter. Cardinale vers. F
20x20 cm - 8"x8"



0390 Ter. Giglio vers. F
20x20 cm - 8"x8"



*0392 Ter. Ornamento vers. F
20x20 cm - 8"x8"



Terra

Componi e personalizza la posa utilizzando i colori e le decorazioni disponibili.
Compose and customize the laying using the colors and decorations available.



Esempio / Example:
*0603 Mix decori esagono vers. C
25x21,6 cm - 10"x8.5"



Esempio / Example:
*0605 Mix decori 20x20 vers. C
20x20 cm - 8"x8"

gres fine porcellanato colorato in massa / fine full-body coloured porcelain stoneware

Componi e personalizza la posa utilizzando i colori e le decorazioni disponibili.
Compose and customize the laying using the colors and decorations available.



Esempio / Example:
*0602 Mix decori esagono vers. F
25x21,6 cm - 10"x8.5"



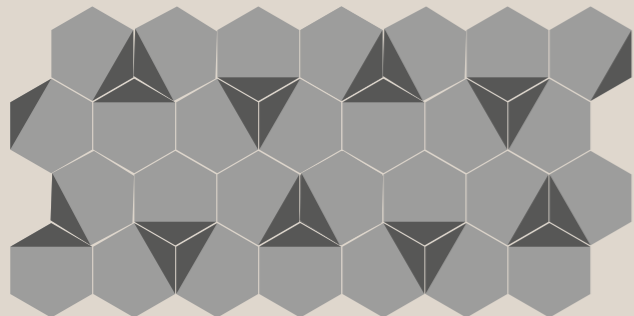
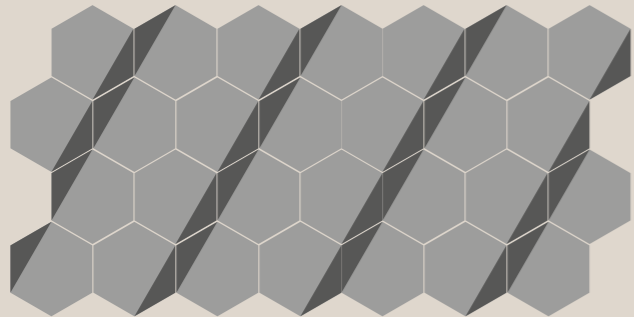
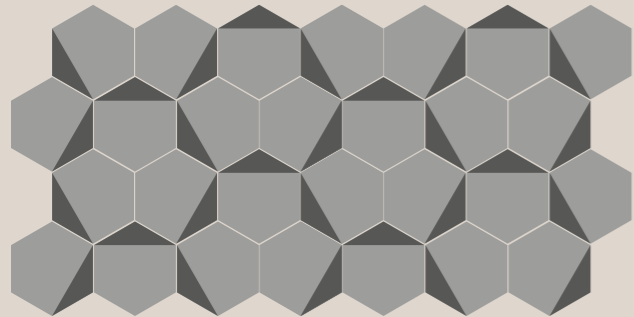
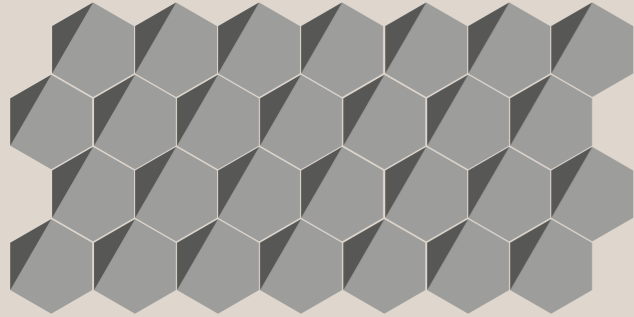
Esempio / Example:
*0604 Mix decori 20x20 vers. F
20x20 cm - 8"x8"

*Inscotolamento controllato: 2 pezzi minimo per ogni soggetto di decoro.
Mix guaranteed: 2 tiles per each decorative subject.



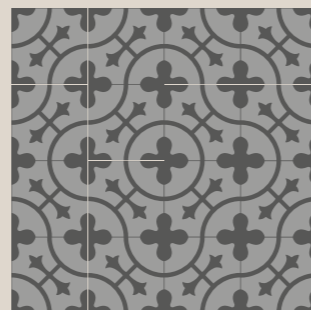
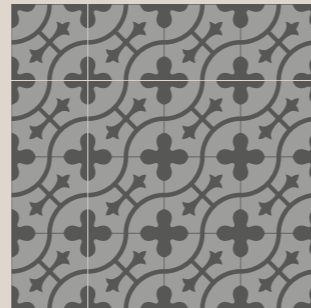
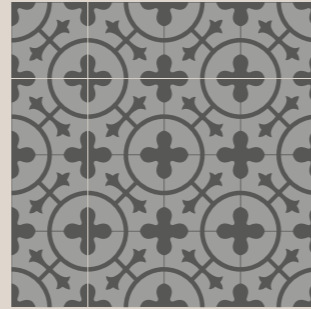
0395 Ter. Porzione vers. C
25x21,6 cm - 10"x8.5"

0396 Ter. Porzione vers. F
25x21,6 cm - 10"x8.5"



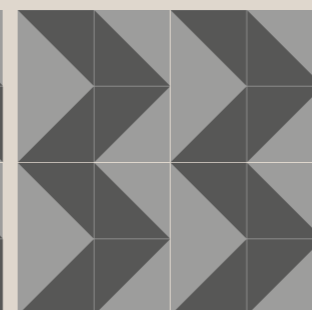
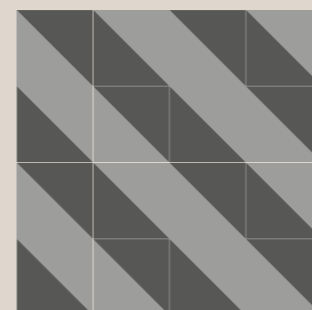
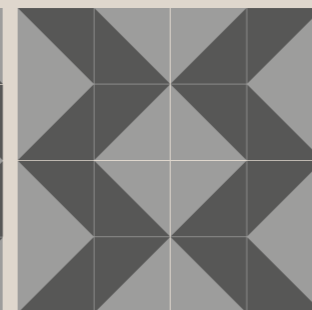
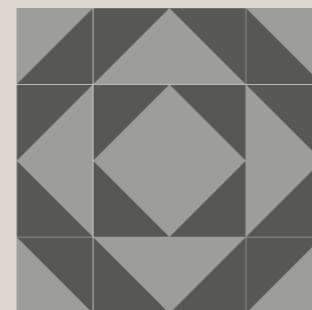
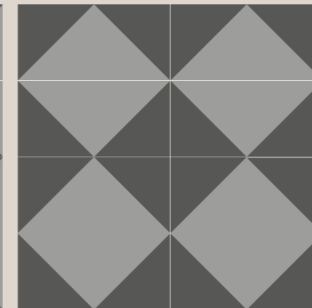
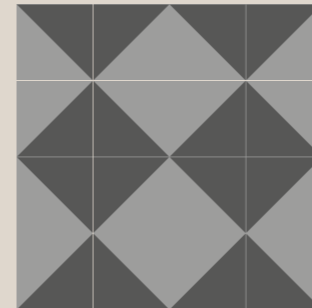
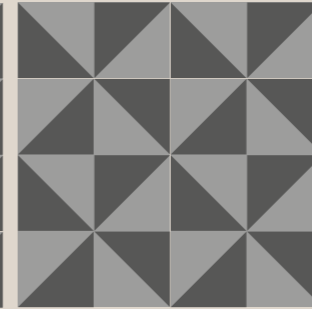
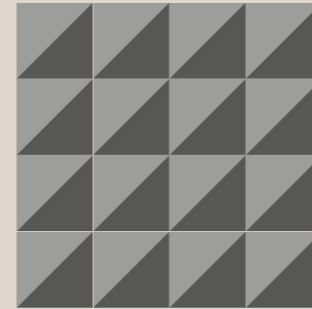
0391 Ter. Ornamento vers. C
20x20 cm - 8"x8"

0392 Ter. Ornamento vers. F
20x20 cm - 8"x8"



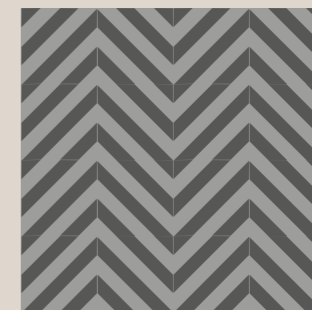
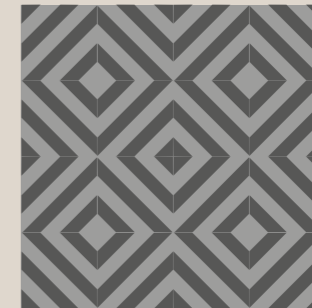
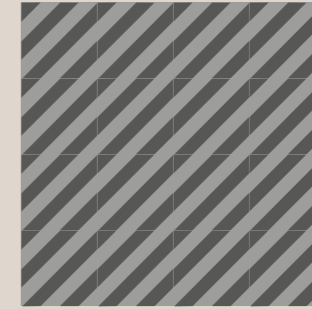
0375 Ter. Triangolo vers. C
20x20 cm - 8"x8"

0376 Ter. Triangolo vers. F
20x20 cm - 8"x8"



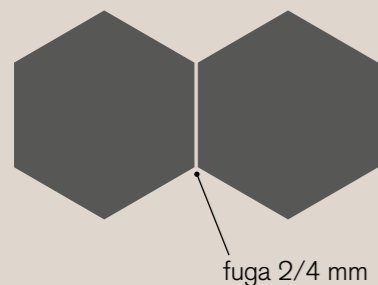
0379 Ter. Linea vers. C
20x20 cm - 8"x8"

0380 Ter. Linea vers. F
20x20 cm - 8"x8"



Si consiglia di utilizzare una fuga dai 2 ai 4 mm a seconda dell'estensione dell'area da pavimentare e/o rivestire.

We recommend to use an grout line from 2 to 4 mm depending on the extension of the laying area.



Battiscopa 4,7x20 cm - 1.8"x8"

- 0584 Ter. avorio 0587 Ter. grigio
- 0585 Ter. ocra 0588 Ter. antracite
- 0586 Ter. rosso 0589 Ter. nero

Pack.	Thickness	Pcs/Box	Mq/Box	Kg/Box	Box/Pallet	Mq/Pallet	Kg/Pallet
20x20	9 mm	30	1,20	23,90	56	67,200	1.370,40
esagono 25x21,6	9 mm	29	1,17725	23,20	36	42,381	848,20
7,5x30	8,5 mm	48	1,08	19,50	48	51,840	949,00

Si consiglia di utilizzare uno stucco in tono con il materiale ceramico.

We advise using a grout that matches the colour of the ceramic material.




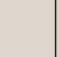




colori / colors	stucco / grout Kerakoll		stucco / grout Mapei
	A	B	
avorio	7 jasmin	50 pergamon	130 jasmine
ocra	9 caramel		132 beige 2000
rosso	10 terracotta	11 marrone	141 caramel
grigio	2 grigio luce	3 grigio perla	110 manhattan 2000
antracite	4 grigio ferro		113 grigio cemento
nero	6 nero	5 antracite	114 antracite

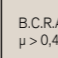
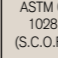
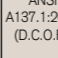
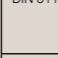
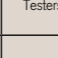

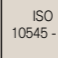





variazione cromatica / shade variation: Terra V3

V1	V2	V3	V4
<p>ASPETTO UNIFORME: le differenze tra piastrelle dello stesso lotto produttivo sono minime.</p>	<p>VARIAZIONE MINIMA: colori simili presentano diverse texture e/o motivi superficiali.</p>	<p>VARIAZIONE MODERATA: Mentre i colori presenti su una singola piastrella sono indicativi dei colori presenti sulle altre piastrelle, il numero dei colori presenti su ogni singolo pezzo può variare significativamente.</p>	<p>VARIAZIONE SOSTANZIALE: Differenze di colore casuali tra le piastrelle, ogni piastrella può avere colori completamente differenti dalle altre. L'effetto finale della posa è unico e irripetibile.</p>
<p>UNIFORM APPEARANCE: Differences among pieces from the same production run are minimal.</p>	<p>SLIGHT VARIATION: Clearly distinguishable texture and/or pattern within similar colors.</p>	<p>MODERATE VARIATION: While the colors present on a single piece of tile will be indicative of the colors to be expected on the other tiles, the amount of colors on each piece may vary significantly.</p>	<p>SUBSTANTIAL VARIATION: Random color differences from tile to tile, so that one tile may have totally different colors from that on other tiles. Thus, the final installation will be unique.</p>

caratteristiche tecniche / technical characteristics

Caratteristiche Tecniche Technical Characteristics. Caractéristiques Techniques Technische Anforderungen Características técnicas Технические характеристики	Norma Norm Norme Norm Norma Norma	Requisiti per misura nominale N. Requirement for nominal size N. Conditions requises pour obtenir mesure nominale N. Voraussetzungen für das Nominalmaß N. Requisitos para el tamaño nominal N. Требования к номинальному размеру N.		Valore medio. Average value. Valeur Moyenne. Durchschnittswert. Valor Mediano. Среднее значение	
		7 cm ≤ N < 15 cm	N ≥ 15 cm	20x20 - Esagono 25x21,6	7,5x30
Lunghezza e Larghezza. Length and width. Longeur et largeur. Länge und Breite. Longitud y anchura. Длина и ширина.		± 0,9 mm	± 0,6% ± 2,0 mm	Conforme. Suitable for. Conforme. Konform. Conforme. Соответствующий.	Conforme. Suitable for. Conforme. Konform. Conforme. Соответствующий.
Spessore. Thickness. Épaisseur. Stärke. Espesor. Толщина.		± 0,5 mm	± 5,0% ± 0,5 mm	Conforme. Suitable for. Conforme. Konform. Conforme. Соответствующий.	Conforme. Suitable for. Conforme. Konform. Conforme. Соответствующий.
Rettilinearità spigoli. Straightness. Équerrage des angles. Geradlinigkeit der Kanten. Rectilineidad de los cantos. Прямолинейность рёбер.		± 0,75 mm	± 0,5% ± 1,5 mm	Conforme. Suitable for. Conforme. Konform. Conforme. Соответствующий.	Conforme. Suitable for. Conforme. Konform. Conforme. Соответствующий.
Ortogonalità. Squareness. Orthogonalité. Rechtwinkigkeit. Ortogonalidad. Ортогональность.		± 0,75 mm	± 0,5% ± 2,0 mm	Conforme. Suitable for. Conforme. Konform. Conforme. Соответствующий.	Conforme. Suitable for. Conforme. Konform. Conforme. Соответствующий.
Planarità. Flatness. Planéité. Planität. Planaridad. Плоскостность.		± 0,75 mm	± 0,5% ± 2,0 mm	Conforme. Suitable for. Conforme. Konform. Conforme. Соответствующий.	Conforme. Suitable for. Conforme. Konform. Conforme. Соответствующий.
Assorbimento % d'acqua. Water Absorption. Absorption d'eau. Wasseraufnahme. Absorción % de agua. Водопоглощение, %.		ISO 10545-3	≤ 0,5%	≤ 0,1%	Conforme. Suitable for. Conforme. Konform. Conforme. Соответствующий.
Sforzo di rottura. Breaking strength. Force de rupture. Bruchlast. Esfuerzo de ruptura. Усилие на излом.		ISO 10545-4	(Spessore. Thickness. ≥ 7,5 mm) S ≥ 1300 N	S ≥ 1800 N	Conforme. Suitable for. Conforme. Konform. Conforme. Соответствующий.
Resistenza alla flessione. Breaking strength. Résistance a la flexion. Biegefestigkeit. Resistencia a la flexión. Прочность на изгиб.		ISO 10545-4	R ≥ 35 N/mm ²	R ≥ 45 N/mm ²	Conforme. Suitable for. Conforme. Konform. Conforme. Соответствующий.
Resistenza all'abrasione profonda. Deep scratch resistance. Résistance à l'abrasion. Tiefenabriebharte. Resistencia a la abrasión profunda. Устойчивость к глубокому истиранию.		ISO 10545-6	≤ 175 mm ³	≤ 150 mm ³	-
Coefficiente di dilatazione termica lineare. Linear heat expansion coefficient. Coefficient de dilatation thermique linéique. Lineare thermische Dehnung. Coeficiente de dilatación térmica lineal. Кoeffициент линейного расширения.		ISO 10545-8	Valore dichiarato (ISO 13006: metodo di prova disponibile). Declared value (ISO 13006: Test method available).	≤ 7 (RK) ⁻¹	≤ 7 (RK) ⁻¹
Resistenza agli sbalzi termici. Thermal shock resistance. Résistance aux écarts de température. Temperaturwechselbeständigkeit. Resistencia a los choques térmicos. Стойкость к перепаду температур.		ISO 10545-9	In accordo con la EN ISO 10545-1 (ISO 13006: metodo di prova disponibile). In accordante whit EN ISO 10545-1 (ISO 13006: Test method available).	Resiste Resistant Résistant Beständig Resiste Выдерживает	Resiste Resistant Résistant Beständig Resiste Выдерживает
Resistenza al gelo. Frost resistance. Résistance au gel. Frostbeständigkeit. Resistencia a las heladas. Морозостойкость.		ISO 10545-12	In accordo con la EN ISO 10545-1 (ISO 13006: Richiesta). In accordante whit EN ISO 10545-1 (ISO 13006: Required).	Resiste Resistant Résistant Beständig Resiste Выдерживает	Resiste Resistant Résistant Beständig Resiste Выдерживает

Caratteristiche Tecniche Technical Characteristics. Caractéristiques Techniques Technische Anforderungen Características técnicas Технические характеристики	Requisiti per misura nominale N. Requirement for nominal size N. Conditions requises pour obtenir mesure nominale N. Voraussetzungen für das Nominalmaß N. Requisitos para el tamaño nominal N. Требования к номинальному размеру N.	Valore medio. Average value. Valeur Moyenne. Durchschnittswert. Valor Mediano. Среднее значение			
		20x20 - Esagono 25x21,6	7,5x30		
Coefficiente di attrito dinamico. Dynamic friction coefficient. Coefficient de frottement dynamique. Dynamischer Reibungskoeffizient. Coeficiente de rozamiento dinámico. Устойчивость к скольжению при движении.		B.C.R.A. μ > 0,40	D.M.I. Giugno 1989 n. 236 (μ > 0,40)	> 0,40	-
Coefficiente di attrito statico. Coefficient of static friction. Coefficient de frottement statique. Statischer Reibungskoeffizient. Coeficiente de rozamiento estático. Устойчивость к скольжению при статической нагрузке.		ASTM C 1028 (S.C.O.F.)	≥ 0,60 ASCIUTTO ≥ 0,60 BAGNATO ≥ 0,60 DRY ≥ 0,60 WET	≥ 0,60 DRY ≥ 0,60 WET	-
Coefficiente di attrito dinamico. Dynamic friction coefficient. Coefficient de frottement dynamique. Dynamischer Reibungskoeffizient. Coeficiente de rozamiento dinámico. Устойчивость к скольжению при движении.		ANSI A137.1:2012 (D.C.O.F.)	≥ 0,42 BAGNATO ≥ 0,42 WET	≥ 0,42	-
Classificazione antiscivolo Non-slip classification. Classification antidérapement Trittsicherheitsklassen Clasificación antideslizamiento Классификация противоскользящей плитки.		DIN 51130	In funzione dell'ambiente o della zona di lavoro. Based on the environment or on the working area.	R9	-
Resistenza allo scivolamento Slip resistance. Résistance au glissement Rutschfestigkeit Resistencia al deslizamiento Сопротивление скольжению.		BS7976-2:2002 Pendulum Testers	Bassa potenzialità di scivolamento. Low slip risk. ≥ 36 ASCIUTTO ≥ 36 BAGNATO ≥ 36 DRY ≥ 36 WET	≥ 36 DRY ≥ 36 WET	-
Classificazione antiscivolo (Piedi nudi) Non-slip classification (Barefoot) Classification antidérapement (Pieds nus). Trittsicherheitsklassen (Barfuß) Clasificación antideslizamiento (Pies descalzos) Классификация противоскользящей плитки (Босые ноги).		DIN 51097	Secondo la classificazione indicata dal fabbricante. Manufactured to state classification.	A	-
Resistenza ai prodotti chimici di uso domestico ed agli additivi per piscina. Resistance to household chemicals and swimming pool salts. Résistance aux produits chimiques à usage domestique et aux adjuvants pour piscines. Beständigkeit gegen Haushaltschemikalien und Badewasserzusätze. Resistencia a los productos químicos de uso doméstico y a los aditivos para piscinas. Устойчивость к воздействию химических средств домашнего использования и химических добавок для бассейна.		ISO 10545-13	Valore dichiarato (ISO 13006: secondo la classificazione indicata dal fabbricante). Declared value (ISO 13006: Manufacturer to state classification).	ULA	GLA
Resistenza ad alte concentrazioni di acidi e alcali. Resistance to high concentrations of acids and alkalis. Résistance aux acides et aux alcalis à haute concentration. Beständigkeit gegen hochkonzentrierte Säuren und Laugen. Resistencia a altas concentraciones de ácidos y álcalis. Устойчивость к кислотам и щелочам высокой концентрации.		ISO 10545-13	Valore dichiarato (ISO 13006: metodo di prova disponibile). Declared value (ISO 13006: Test method available).	UHA	GHA
Resistenza alle macchie. Resistance to stains. Résistance aux taches. Fleckenbeständigkeit. Resistencia a las manchas. Тойкость к образованию пятен.		ISO 10545-14	Valore dichiarato (ISO 13006: metodo di prova disponibile). Declared value (ISO 13006: Test method available).	Pulibile Cleanable Nettoyable Kann gereinigt werden Limpiable Моющийся	Pulibile Cleanable Nettoyable Kann gereinigt werden Limpiable Моющийся
Rilascio di sostanze pericolose: Cadmio (in mg/dm ²) e Piombo (in mg/dm ²). Release of dangerous substances: Cadmium (in mg/dm ²) and Lead (in mg/dm ²). Emission de substances dangereuses: Cadmium (mg/dm ²) et Plomb (mg/dm ²). Emission von gefährlichen Stoffen: Cadmium (mg/dm ²) und Blei (mg/dm ²). Emisión de sustancias peligrosas: Cadmio (mg/dm ²) y Plomo (mg/dm ²). Выделение вредных веществ: Кадмия (в мг/дм ²) И свинца (в мг/дм ²).		ISO 10545-15	Valore dichiarato (ISO 13006: metodo di prova disponibile). Declared value (ISO 13006: Test method available).	-	≤ 0,01 mg/dm ² Cd ≤ 0,1 mg/dm ² Pb



pag. 6

Rivestimento/wall Pavimento/floor:
 esa. 25x21,6 cm (10"x8.5") antracite
 esa. 25x21,6 cm (10"x8.5") nero
 esa. 25x21,6 cm (10"x8.5") mix decori vers. F



pag. 12

Pavimento/floor:
 20x20 cm (8"x8") avorio
 20x20 cm (8"x8") ocra
 20x20 cm (8"x8") rosso

Rivestimento/wall:
 20x20 cm (8"x8") dec. stella vers. C



pag. 18

Pavimento/floor:
 esa. 25x21,6 cm (10"x8.5") nero
 esa. 25x21,6 cm (10"x8.5") antracite
 esa. 25x21,6 cm (10"x8.5") mix decori vers. F

Rivestimento/wall:
 7,5x30 cm (3"x12") antracite
 7,5x30 cm (3"x12") antracite dec. S/3



pag. 24

Pavimento/floor:
 esa. 25x21,6 cm (10"x8.5") avorio
 esa. 25x21,6 cm (10"x8.5") ocra
 esa. 25x21,6 cm (10"x8.5") rosso
 esa. 25x21,6 cm (10"x8.5") dec. floreale vers. C

Rivestimento/wall:
 7,5x30 cm (3"x12") white (Tone)



pag. 30



Pavimento/floor:
 esa. 25x21,6 cm (10"x8.5") dec. rombo vers. F
 22,5x90 beige (Atelier)

Rivestimento/wall:
 7,5x30 cm (3"x12") grigio



pag. 34



Pavimento/floor:
 esa. 25x21,6 cm (10"x8.5") dec. porzione vers. C

Rivestimento/wall:
 7,5x30 cm (3"x12") avorio
 7,5x30 cm (3"x12") ocra



pag. 38



Pavimento/floor:
 20x20 cm (8"x8") decori mix vers. F

Rivestimento/wall:
 7,5x30 cm (3"x12") white (Tone)
 7,5x30 cm (3"x12") white matt (Tone)



pag. 42

Pavimento/floor:
 20x20 cm (8"x8") nero
 20x20 cm (8"x8") rosso

Rivestimento/wall:
 20x20 cm (8"x8") dec. astro vers F.



credits

© Copyright 2014
by Marca Corona Spa

ART DIRECTION
drefarecreate.it

PRINT
Tipolitografia Pagani S.r.l

First Edition
Printed in January 2015



CERAMICHE MARCA CORONA S.p.A.

Via Emilia Romagna, 7

41049 Sassuolo (Modena) Italia

Tel. +39 0536 867200

Fax +39 0536 867320-51

info@marcacorona.it

www.marcacorona.it